

Full color Asynchronous controller Parameter

-----HD-C10

1. Led display controller functions

HD-C10 is Asynchronous led display controller, and working no need PC. Playing high definition programs .like video, image, animation, text, temperature, office file etc. The system include two parts HD-C1 controller and software called HDPlayer.

Usually one screen with 1pcs HD-C10+1PCS HUB, if the screen is bigger, for best result, user can add R500/R501 cascade connection. So HD-C10 is Full color Asynchronous cascaded controller

2. Device list

types	model	Main function
Full color asynchronous cascade controller	HD-C10	Asynchronous core controller, with 4Gmemory function, and connected display Itself also can be used as 1PCS receiving card
Receiving card	R500/R501	Connected screen, show the program on LED screen
Controller software	HDPlayer	Setting screen parameter, edit and send program
Accessories		HUB board, cable , U-disk

3 Model Selection Reference

Model	Control range(width* height)	sub model
HD-C10	384 (width) *256 (height) ; 1024 (width) *96 (height) ; 304 (width) *320 (height) ;	HD-C10F (WIFI) HD-C10W (3G) HD-C10G (4G)
R500	Recommend :256 (width) *128 (height)	
R501	Recommend :256 (width) *192 (height)	

Notice: If Display less than 256W*128H, Suggest 1PCS HD-C10+1PCS HUB

If Display 384W*256H, Suggest 1PCS HD-C10 +1PCS R500 or R501

If Display 1024W*96H, Suggest 1PCS HD-C10 +3PCS R500 or R501

If Display 304W*320H, Suggest 1PCS HD-C10 +3PCS R500 or R501

4 .Application place

1) Control card can connect with router, internet cascaded management as bellow:



Picture 4-1 managing several screen through Internet

2) Control card can connect with computer directly, showing as bellow:



Picture 4-2 only one screen and control by Network cable directly

Notice: Each screen just need 1PCS C10 card, and the number of receiving card depend on screen size.

3) Updated program can by Network cable directly, also updated via U-disk and moving hard disk drive.

5. Advantage than old version HD-C1/HD-C3

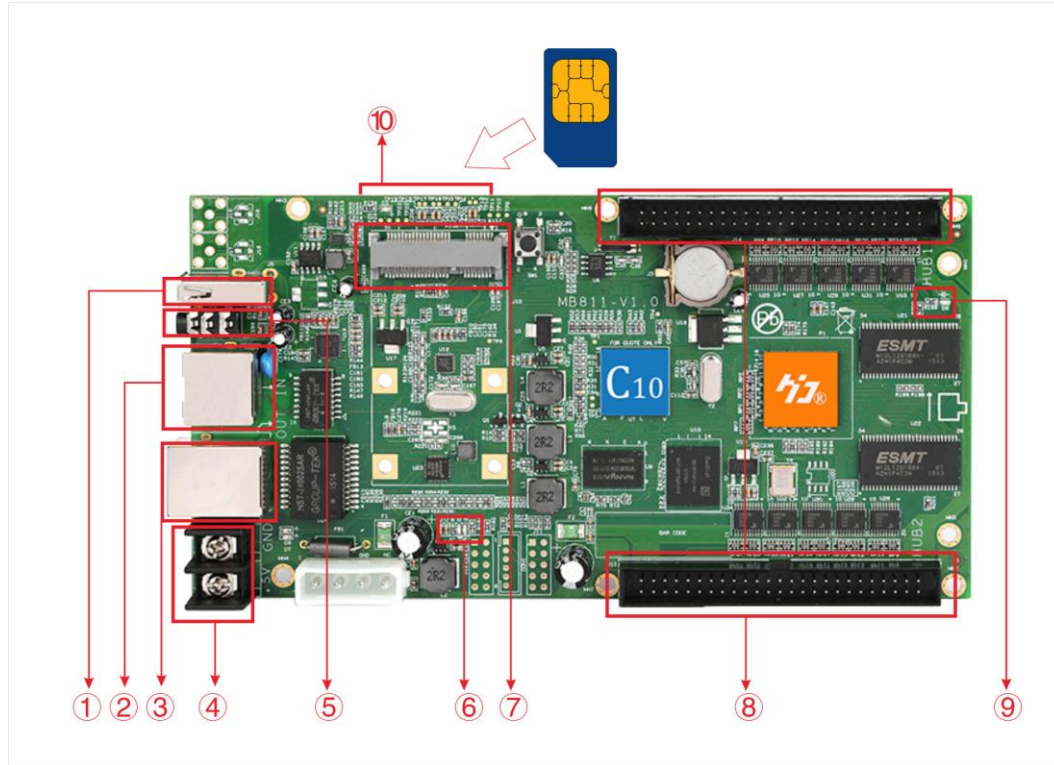
- 1) Price cheaper than C3
- 2) Showing effects better and refresh higher
- 3) Opening display time shorted to 25seconds
- 4) Also can cascaded and then good effects
Also support 1 cabinet 1 controller
- 5) Add functions of SWF flash, neon, animation character, internet weather report
- 6) Flashed memory: Changed to 4GB
- 7) Have 3G/4G and WIFI version controller

5. Details Parameter

Module types	Compatible indoor and outdoor, full color and single/dual color module; Support virtual module; Support PWM chips such as MBI5041/5042、 MBI5050、MY9221、MY9268.
Scanning mode	Support static scan and 1/32 scan randomly
Control range	384 (width) *256 (height) 1024 (width) *96 (height) 304 (width) *320 (height)
Single receiving card pixels control range	Suggest HD- R500: 256 (width) *128 (height) HD-R501: 256 (width) *192 (height)
Gray level	Support 0-65536 adjustable
Program update	Updated by PC, LAN, Internet, U-disk, or mobile hard disk drive
Showing functions	video, pictures, animated Gif, text, office document, clock, timer etc Support remote control, temperature, humidity, brightness expansion function
Video function	Support hardware video decoder, sending directly, and without transfer code waiting. Support format AVI、WMV、RMVB、MP4、3GP、ASF、MPG、FLV、F4V、 MKV、MOV、DAT、VOB、TRP、TS、WEBM
Picture format	Support BMP、GIF、JPG、JPEG、PNG、PBM、PGM、PPM、XPM、XBM etc
Text	Support for text editing, picture insertion and support word、txt、rtf、html direct importing.
Document	Support Office2007 such as DOC、DOCX、XLSX、XLS、PPT、PPTX document format.
Clock	Support analog clock, digital clock, A variety of dial clock
Audio output	Standard dual channel stereo output
Memory capacity	On board Flash 4GB Allows users to use U-disk memory expansion
Communication type	100M network Port RJ45, Internet, or LAN
Operating temperature	-20℃-80℃
Port	IN: 5V power supply terminal X1, 10/100M RJ45 x1, USB 2.0 x1, The screen test button X1 OUT:1000M RJ45 x1, dual stereo: AUDIO x1, 2 of 50 PIN
Working voltage	4.5V~5.5V
Software	HDPlayer

7. Port Instruction

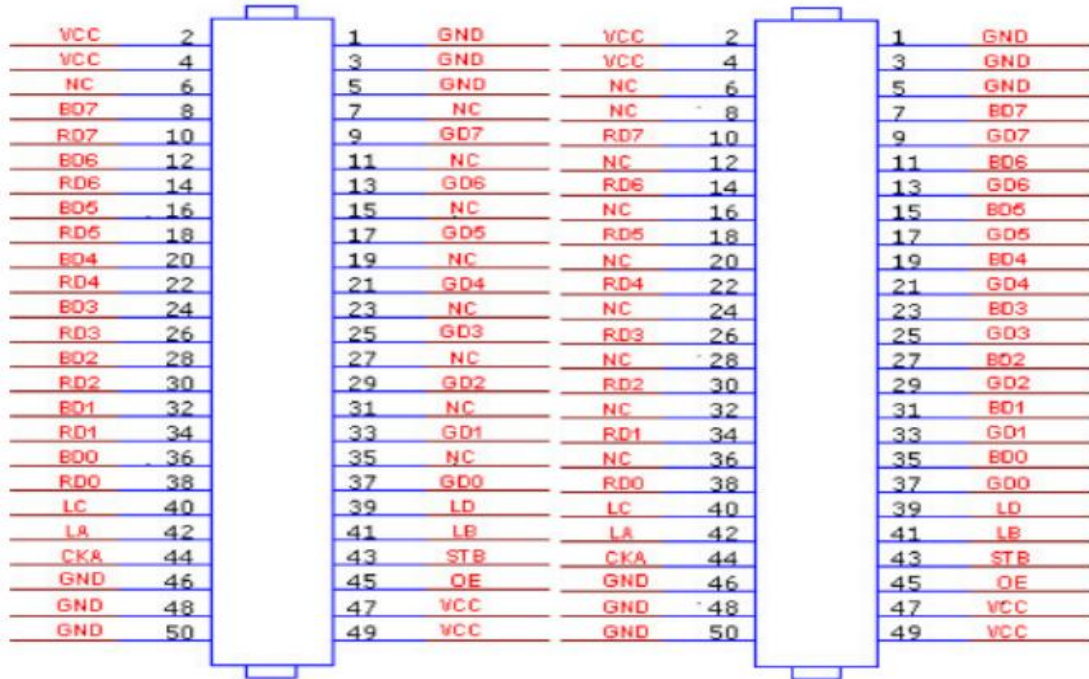
1) HD-C10 Port Instruction:



- ① USB port, connect USB device, such as: U-disk and mobile hard disk drive
- ② Input network port, 100M network port, Normal working: orange lamp always on, green lamp flicker.
- ③ Output network port, 1000M network port, Normal working: D7 green lamp always on, D8 green lamp flicker.
- ④ Power interface, 2 pin power terminal connect with 5V power
- ⑤ Audio output interface, standard dual channel stereo output
- ⑥ Power led-D2 green lamp normal working is always on, running lights-D1 green lamp normal working is flicker.
- ⑦ MINI-PCIE connect 3G model or WIFI model (select-able)
- ⑧ 1 of 50 pin, connect HUB board, connecting with all kind of cabinet interface through HUB
- ⑨ Display lamp-D7 green lamp normal working is flicker
- ⑩ The back SIM card slot, inserted with 3G/4G card for 3G/4G internet solutions

2) 50 pin definition

Support 16 "RGBR" Parallel Data, definition as below:

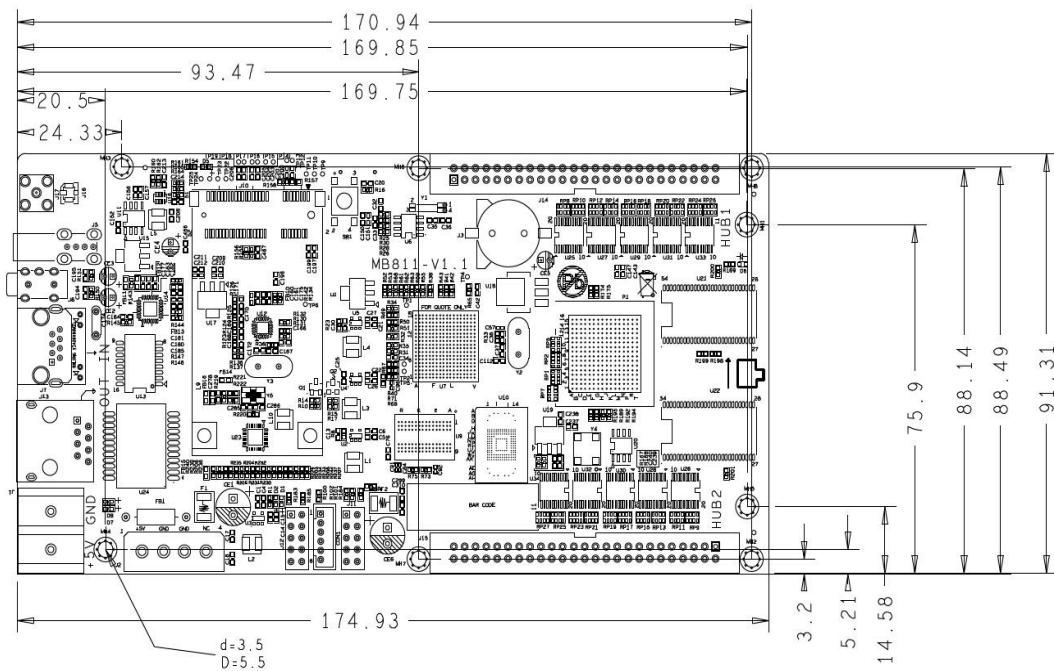


General Full Color Port 1

General Full Color Port 2

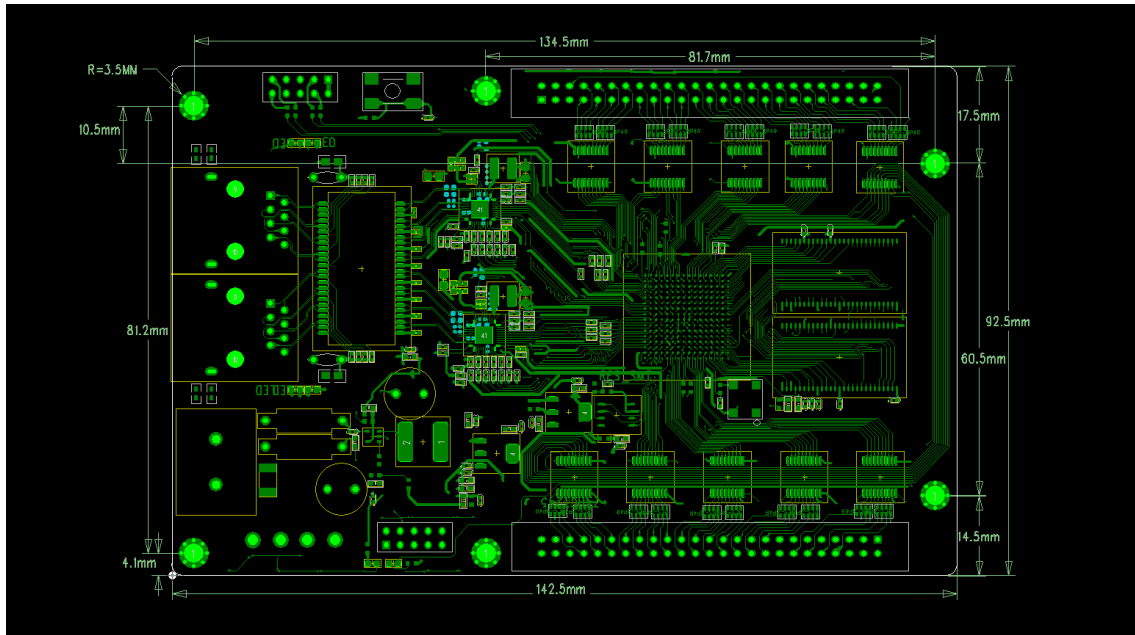
8, Dimension Chart

1) HD-C10 dimension chart as bellow:

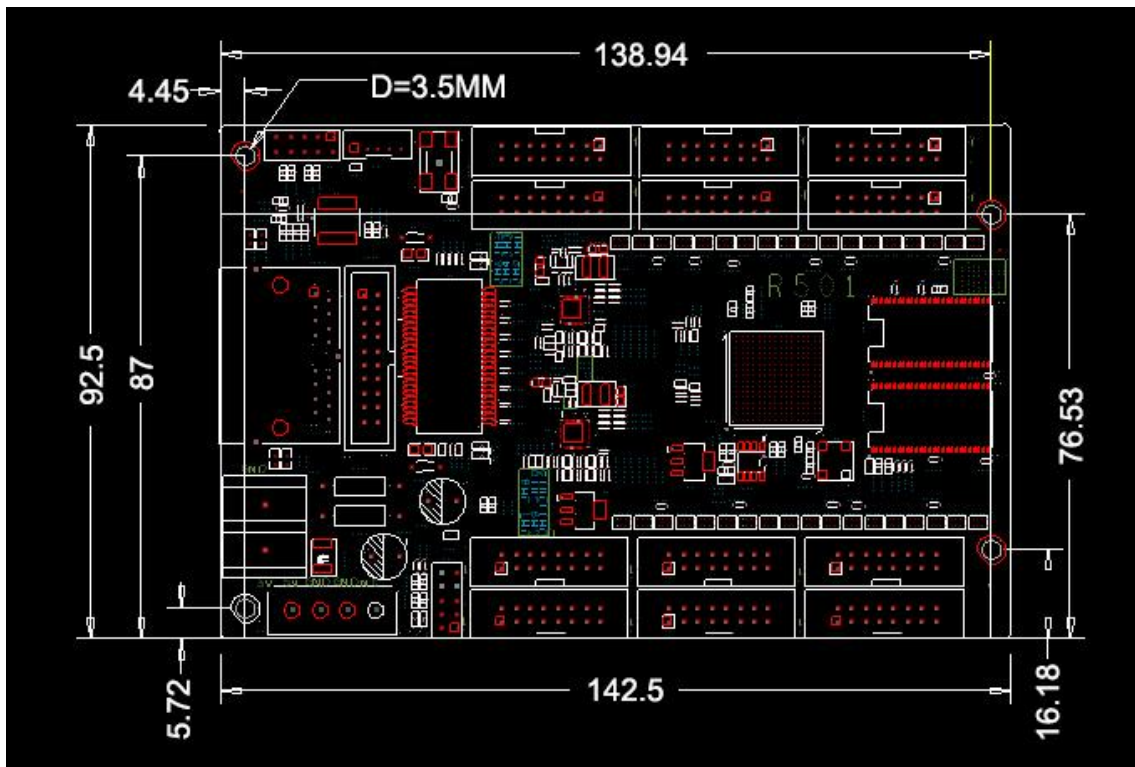


Picture 8-1 HD-C10 dimension chart

2) Receiving card dimension chart as below



Picture 8-2 dimension chart R500



Picture 8-3 Dimension Chart R501